



HIGH PERFORMANCE CAR AUDIO



HCCATM
COMPETITION



XTR

COBALT



2025

SOUND PROS INC., ALL RIGHTS RESERVED



ORION

HIGH PERFORMANCE CAR AUDIO

Orion High Performance Car Audio has a storied history in the industry, particularly due to its strong presence in sound pressure level (SPL) competitions. Our products involvement in these competitions, as well as its dedicated team and enthusiastic fan base, have led to numerous award-winning vehicles and the breaking of world records. Orion's focus on amplifiers and subwoofers has garnered significant attention for their remarkable ability to deliver extremely loud sound systems, making Orion highly coveted among audio enthusiasts. Throughout its history, Orion has consistently introduced new and innovative technologies aimed at enhancing sound quality and overall audio performance. Orion High Performance Car Audio's rich history, and reputation for groundbreaking technologies and products have solidified its position as a sought-after brand in the car audio industry.

proud to be **LOUD!**

- 03 AMPLIFIERS**
- 15 SUBWOOFERS**
- 25 ENCLOSURES**
- 28 SPEAKERS**
- 49 CROSSEOVERS**
- 50 EQUALIZERS**

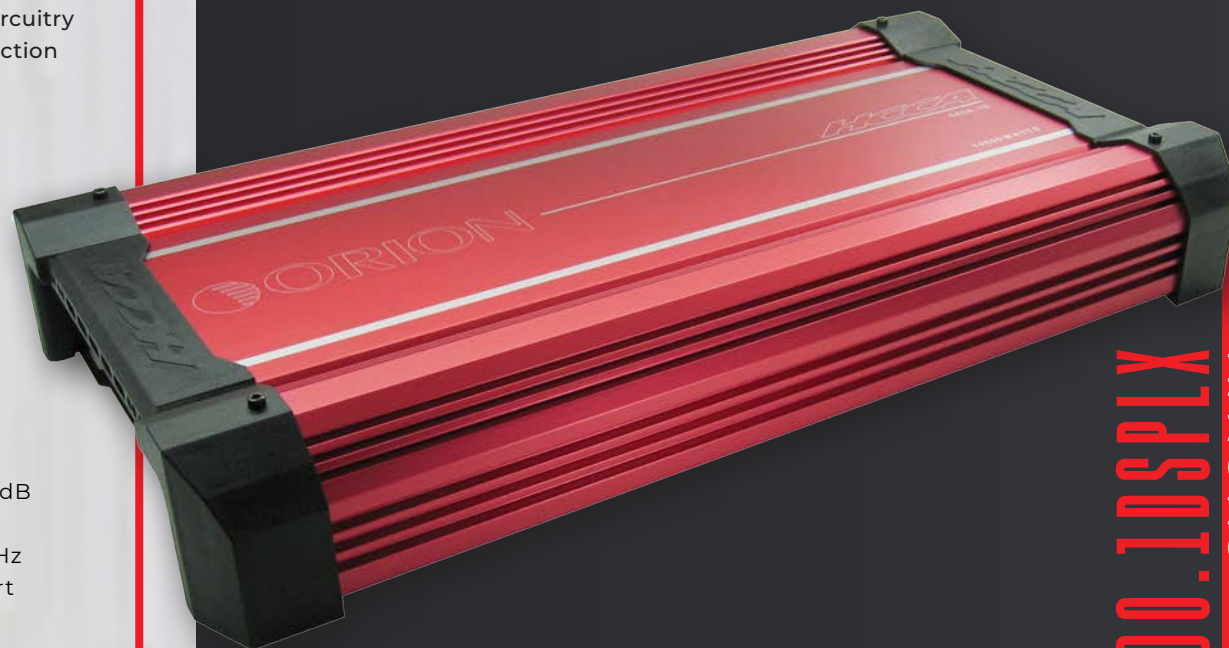
HCCA CLASS-D AMPLIFIERS

HCCA amplifiers are specifically designed for high-performance and competition level applications. This is how this series received its name HCCA, High-Current Competition Amplifiers. HCCA amplifiers are known for their high current capabilities, which allows them to deliver substantial power to loud speakers. The design feature ensures that the amplifier can handle demanding loads and deliver consistent performance even under extreme conditions. HCCA amplifiers are also equipped with advanced protection circuitry to safeguard against damage and ensure the longevity of the amplifier. These protection features included thermal, short circuit and load protection.



SHARED SPECIFICATIONS

- 1-Ohm Mono Stable
- Low Level Inputs
- Low Level Outputs
- Phase Shift: 0 - 180°
- Variable Bass Boost: 0 - 18dB
- Subsonic Filter Switch: 25Hz On/Off
- Linkable amplifier with identical model
- Frequency Response: 15Hz - 250Hz +/- 2.5dB
- Adjustable Input Sensitivity (200mV - 8V)
- Variable Low-Pass Crossover: 40Hz - 300Hz
- 4-Way Protection Circuitry: Thermal, Short Circuit, Under Voltage and Over-Voltage
- Total Harmonic Distortion: 0.05%
- Signal-to-Noise Ratio: >90dB
- Balanced Input (CMRR)
- Damping Factor: >200
- Remote Bass Knob



HCCA3000.1DSPLX SHOWN

HCCA3000.1DSPLX

MONO-Block Class-D Amplifier 3000 Watts RMS Output

3000 Watts @ 1 Ohms
2100 Watts @ 2 Ohms
1350 Watts @ 4 Ohms
6000 Watts @ 2 Ohms LINKED
Dimensions: (W x H x L)
18.89 x 3.15 x 11.89"
(480 x 80 x 302mm)

HCCA5000.1DSPLX

MONO-Block Class-D Amplifier 5000 Watts RMS Output

5800 Watts @ 1 Ohms
3600 Watts @ 2 Ohms
2300 Watts @ 4 Ohms
11600 Watts @ 2 Ohms LINKED
Dimensions: (W x H x L)
20.47 x 3.15 x 11.89"
(520 x 80 x 302mm)

HCCA8000.1DSPLX

MONO-Block Class-D Amplifier 8000 Watts RMS Output

8500 Watts @ 1 Ohms
5000 Watts @ 2 Ohms
2900 Watts @ 4 Ohms
17000 Watts @ 2 Ohms LINKED
Dimensions: (W x H x L)
24.02 x 3.15 x 11.89"
(610 x 80 x 302mm)

HCCA12500.1DSPLX

MONO-Block Class-D Amplifier 12500 Watts RMS Output

12700 Watts @ 1 Ohms
7500 Watts @ 2 Ohms
4300 Watts @ 4 Ohms
25400 Watts @ 2 Ohms LINKED
Dimensions: (W x H x L)
33.85 x 3.15 x 11.89"
(860 x 80 x 302mm)

HCCA17000.1DSPLX

MONO-Block Class-D Amplifier 17000 Watts RMS Output

17500 Watts @ 1 Ohms
10500 Watts @ 2 Ohms
6000 Watts @ 4 Ohms
35000 Watts @ 2 Ohms LINKED
Dimensions: (W x H x L)
37.79 x 3.15 x 11.89"
(960 x 80 x 302mm)

MONO-BLOCK
CLASS-D
AMPLIFIERS

proud to be **LOUD!**

HCCA CLASS A/B AMPLIFIERS

When it comes to performance, the HCCA A/B multi-channel amplifiers are the obvious choice to compete with the higher frequencies. The HCCA series are known for their robust construction, reliable performance and the ability to deliver powerful and clean audio reproduction.

HCCA2000.4
SHOWN



SHARED SPECIFICATIONS

- 2-Ohm Stereo Stable
- Low Level Inputs
- Low Level Outputs
- Phase Shift: 0 - 180°
- Variable Bass Boost: 0 - 18dB
- Adjustable Input Sensitivity (200mV - 6V)
- Frequency Response: 20Hz - 35kHz +/- 1dB
- Variable Low-Pass Crossover: 40Hz - 300Hz
- Variable High-Pass Crossover: 40Hz - 1.25kHz / 400Hz - 12.5kHz
- 4-Way Protection Circuitry: Thermal, Short Circuit, Under Voltage and Over-Voltage
- Total Harmonic Distortion: 0.005%
- Signal-to-Noise Ratio: >95dB
- Balanced Input (CMRR)
- Damping Factor: >100
- Remote Gain Function

HCCA2000.5

5-Channel Class-AB/D Amplifier
2000 Watts RMS Output
4 x 220 Watts | 1 x 650W @ 4 Ohms
4 x 330 Watts | 1 x 1000W @ 2 Ohms
2 x 1000 Watts @ 4 Ohms
Dimensions: (W x H x L)
17.32 x 3.15 x 11.89"
(440 x 80 x 302mm)

HCCA1200.2

2-Channel Class-A/B Amplifier
1200 Watts RMS Output
2 x 400 Watts @ 4 Ohms
2 x 600 Watts @ 2 Ohms
1 x 1200 Watts @ 4 Ohms
Dimensions: (W x H x L)
15.75 x 3.15 x 11.89"
(400 x 80 x 302mm)

HCCA1500.2

2-Channel Class-A/B Amplifier
1500 Watts RMS Output
2 x 500 Watts @ 4 Ohms
2 x 750 Watts @ 2 Ohms
1 x 1500 Watts @ 4 Ohms
Dimensions: (W x H x L)
15.75 x 3.15 x 11.89"
(400 x 80 x 302mm)

HCCA2000.2

2-Channel Class-A/B Amplifier
2000 Watts RMS Output
2 x 600 Watts @ 4 Ohms
2 x 1000 Watts @ 2 Ohms
1 x 2000 Watts @ 4 Ohms
Dimensions: (W x H x L)
20.47 x 3.15 x 11.89"
(520 x 80 x 302mm)

HCCA1000.4

4-Channel Class-A/B Amplifier
1000 Watts RMS Output
4 x 150 Watts @ 4 Ohms
4 x 250 Watts @ 2 Ohms
2 x 500 Watts @ 4 Ohms
Dimensions: (W x H x L)
15.75 x 3.15 x 11.89"
(400 x 80 x 302mm)

HCCA1500.4

4-Channel Class-A/B Amplifier
1500 Watts RMS Output
4 x 250 Watts @ 4 Ohms
4 x 375 Watts @ 2 Ohms
2 x 750 Watts @ 4 Ohms
Dimensions: (W x H x L)
17.32 x 3.15 x 11.89"
(440 x 80 x 302mm)

HCCA2000.4

4-Channel Class-A/B Amplifier
2000 Watts RMS Output
4 x 300 Watts @ 4 Ohms
4 x 500 Watts @ 2 Ohms
2 x 1000 Watts @ 4 Ohms
Dimensions: (W x H x L)
20.47 x 3.15 x 11.89"
(520 x 80 x 302mm)

HCCA CLASS-H AMPLIFIERS

HCCA Class H amplifiers is a highly efficient amplifier by keeping the power consumption minimal when the input signals are low. By doing so it takes advantage of when the signal increases the power supply would be able to deliver even more power and aids keeping the amplifier cooler.



SHARED SPECIFICATIONS

- 2-Ohm Stereo Stable
- Low Level Inputs
- Low Level Outputs
- Phase Shift: 0 - 180°
- Variable Bass Boost: 0 - 18dB
- Adjustable Input Sensitivity (200mV - 6V)
- Frequency Response: 20Hz - 35kHz +/- 1dB
- Variable Low-Pass Crossover: 40Hz - 300Hz
- Variable High-Pass Crossover: 40Hz - 1.25kHz / 400Hz - 12.5kHz
- 4-Way Protection Circuitry: Thermal, Short Circuit, Under Voltage and Over-Voltage
- Total Harmonic Distortion: 0.005%
- Signal-to-Noise Ratio: >95dB
- Balanced Input (CMRR)
- Damping Factor: >100
- Remote Gain Function

HCCA3000.2H

2-Channel Class-H Amplifier
3000 Watts RMS Output
2 x 900 Watts @ 4 Ohms
2 x 1500 Watts @ 2 Ohms
1 x 3000 Watts @ 4 Ohms
Dimensions: (W x H x L)
24.02 x 3.15 x 11.89"
(610 x 80 x 302mm)

HCCA4000.2H

2-Channel Class-H Amplifier
4000 Watts RMS Output
2 x 1200 Watts @ 4 Ohms
2 x 2000 Watts @ 2 Ohms
1 x 4000 Watts @ 4 Ohms
Dimensions: (W x H x L)
27.95 x 3.15 x 11.89"
(710 x 80 x 302mm)

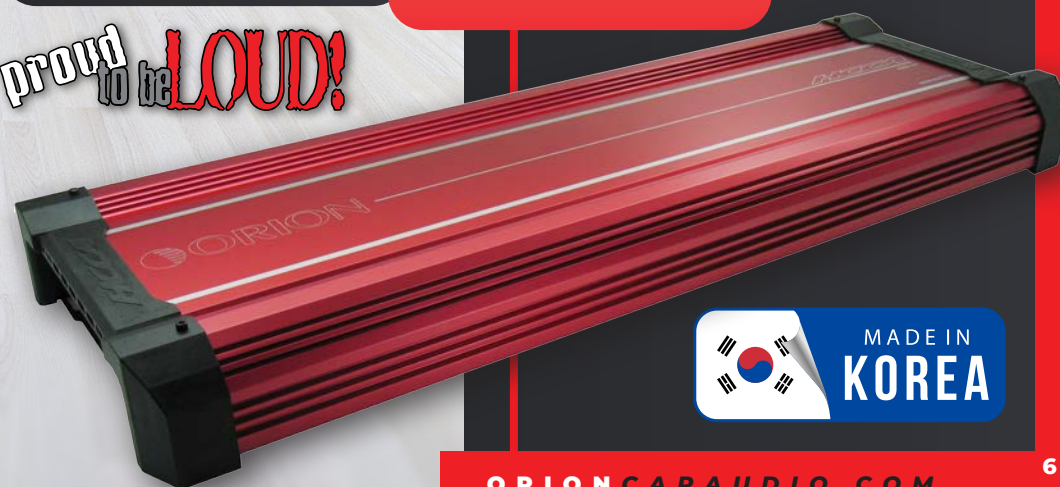
HCCA3000.4H

4-Channel Class-H Amplifier
1000 Watts RMS Output
4 x 450 Watts @ 4 Ohms
4 x 750 Watts @ 2 Ohms
2 x 1500 Watts @ 4 Ohms
Dimensions: (W x H x L)
24.02 x 3.15 x 11.89"
(610 x 80 x 302mm)

HCCA4000.4H

4-Channel Class-H Amplifier
4000 Watts RMS Output
4 x 600 Watts @ 4 Ohms
4 x 1000 Watts @ 2 Ohms
2 x 2000 Watts @ 4 Ohms
Dimensions: (W x H x L)
27.95 x 3.15 x 11.89"
(710 x 80 x 302mm)

proud to be **LOUD!**



HCCA4000.2H
SHOWN

XTR CLASS-D AMPLIFIERS

The performance of the XTR Class-D amplifiers was generally well-regarded among car audio enthusiasts and professionals. These amplifiers have extraordinary power delivery where the Class-D technology allows for high power efficiency, meaning they could product significant power with less heat generated. The design helps minimize distortion and noise, resulting in a more enjoyable listening experience. Lets not forget that the Class-D amplifiers work in tandem when paired with the identical amplifier for effectively doubling the power output and to drive the system to even higher levels of performance. The XTR series amplifiers were constructed using high-quality materials, ensuring longevity and reliability.



XTR2500.1DZ
SHOWN



XTR1500.1DZ

MONO-Block Class-D Amplifier 1500 Watts RMS Output

1500 Watts @ 1 Ohms
1050 Watts @ 2 Ohms
750 Watts @ 4 Ohms
Dimensions: (W x H x L)
11.42 x 2.75 x 9.25"
(290 x 70 x 235mm)

XTR2500.1DZ

MONO-Block Class-D Amplifier 2500 Watts RMS Output

2500 Watts @ 1 Ohms
1750 Watts @ 2 Ohms
1250 Watts @ 4 Ohms
Dimensions: (W x H x L)
14.17 x 2.75 x 9.25"
(360 x 70 x 235mm)

XTR500.1D

MONO-Block Class-D Amplifier 500 Watts RMS Output

500 Watts @ 1 Ohms
250 Watts @ 2 Ohms
125 Watts @ 4 Ohms
Dimensions: (W x H x L)
7.1 x 2.75 x 9.25"
(180 x 70 x 235mm)

XTR1000.1D

MONO-Block Class-D Amplifier 1000 Watts RMS Output

1080 Watts @ 1 Ohms
790 Watts @ 2 Ohms
510 Watts @ 4 Ohms
Dimensions: (W x H x L)
8.66 x 2.75 x 9.25"
(220 x 70 x 235mm)

XTR CLASS A/B AMPLIFIERS

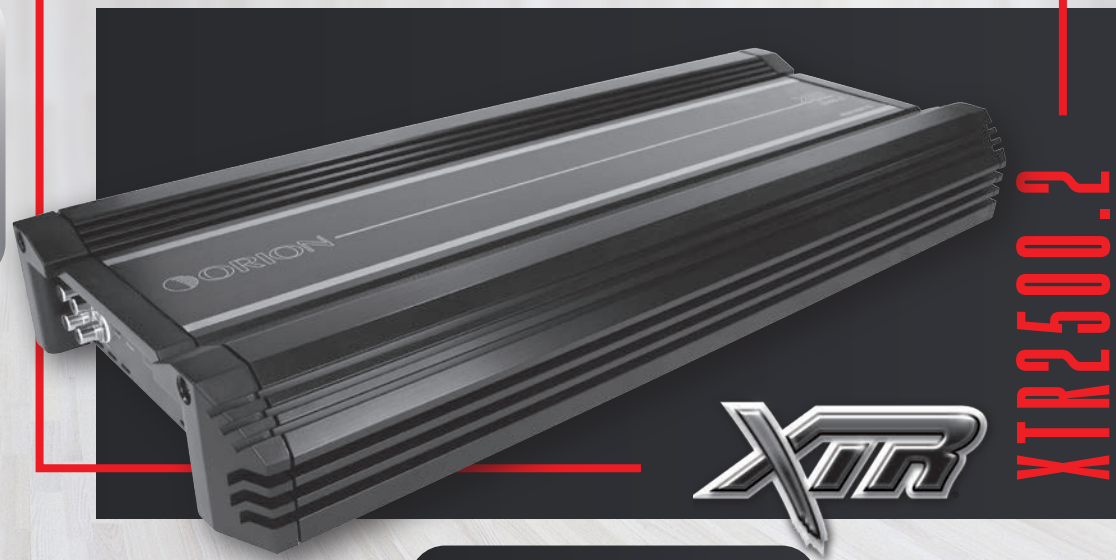
XTR Class A/B multi channel amplifiers are known for their superb sound quality and are commonly used in high fidelity audio systems. They strike a balance between the efficiency of Class B amplifiers and the audio performance of Class A amplifiers, making them a popular choice among Orion enthusiasts who prioritize sound quality. These amplifiers have significantly reduced distortion compared to competitors. While not as efficient as our XTR Class-D amplifiers, the multi channel Class A/B are versatile and can power a wide array of speakers, including full-range speakers and mid-range drivers.



XTR BASS KNOB
Remote Gain Control for
XTR Amplifiers

SHARED SPECIFICATIONS

- 2-Ohm Stereo Stable
- Low Level Inputs
- Low Level Outputs
- Phase Shift: 0 - 180°
- Variable Bass Boost: 0 - 18dB
- Adjustable Input Sensitivity (200mV - 6V)
- Frequency Response: 20Hz - 35kHz +/- 1dB
- Variable Low-Pass Crossover: 50Hz - 400Hz
- Variable High-Pass Crossover:
50Hz - 1.5kHz / 500Hz - 15kHz
- 4-Way Protection Circuitry: Thermal, Short
Circuit, Under Voltage and Over-Voltage
- Total Harmonic Distortion: 0.005%
- Signal-to-Noise Ratio: >95dB
- Damping Factor: >100
- Remote Gain Function



XTR2500.2
SHOWN

XTR750.2

2-Channel Class-A/B Amplifier 750 Watts RMS Output

2 x 225 Watts @ 4 Ohms
2 x 375 Watts @ 2 Ohms
1 x 750 Watts @ 4 Ohms
Dimensions: (W x H x L)
11.5 x 2.75 x 9.25"
(292 x 70 x 235mm)

XTR1500.2

2-Channel Class-A/B Amplifier 1500 Watts RMS Output

2 x 425 Watts @ 4 Ohms
2 x 750 Watts @ 2 Ohms
1 x 1500 Watts @ 4 Ohms
Dimensions: (W x H x L)
17.32 x 2.75 x 9.25"
(440 x 70 x 235mm)

XTR2500.2

2-Channel Class-A/B Amplifier 2500 Watts RMS Output

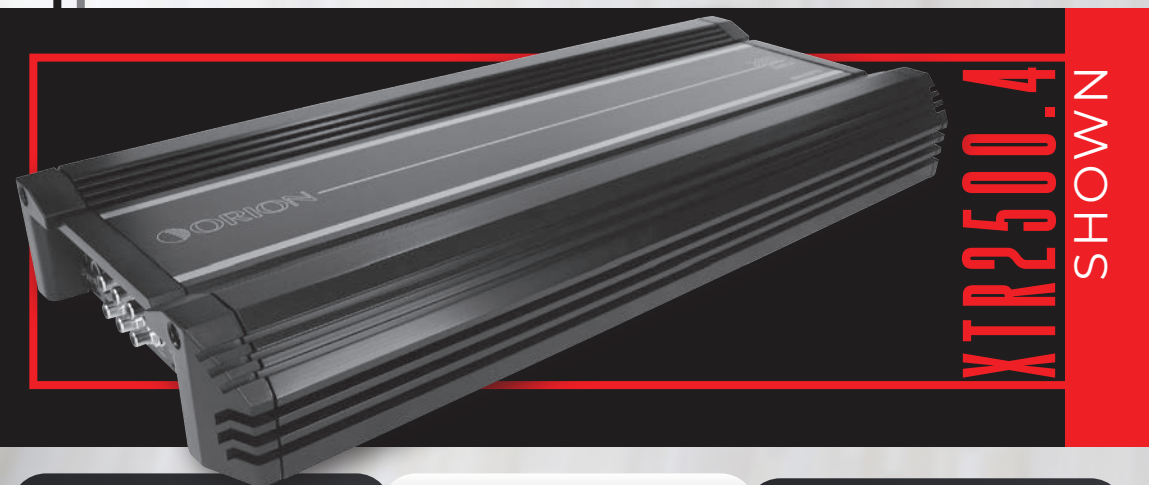
2 x 750 Watts @ 4 Ohms
2 x 1250 Watts @ 2 Ohms
1 x 2500 Watts @ 4 Ohms
Dimensions: (W x H x L)
21.26 x 2.75 x 9.25"
(540 x 70 x 235mm)

XTR CLASS A/B AMPLIFIERS

XTR Class A/B four channel performance amplifier is its versatility. With multiple channels, it allows users to connect various audio sources simultaneously, providing flexibility and convenience. Whether you are amplifying the sound in your car or setting up a professional sound system, this amplifier caters a wide range of applications.

SHARED SPECIFICATIONS

- 2-Ohm Stereo Stable
- Low Level Inputs
- Low Level Outputs
- Phase Shift: 0 - 180°
- Variable Bass Boost: 0 - 18dB
- Adjustable Input Sensitivity (200mV - 6V)
- Frequency Response: 20Hz - 35kHz +/- 1dB
- Variable Low-Pass Crossover: 50Hz - 400Hz
- Variable High-Pass Crossover: 50Hz - 1.5kHz / 500Hz - 15kHz
- 4-Way Protection Circuitry: Thermal, Short Circuit, Under Voltage and Over-Voltage
- Total Harmonic Distortion: 0.005%
- Signal-to-Noise Ratio: >95dB
- Damping Factor: >100
- Remote Gain Function



XTR2500.4
SHOWN

XTR500.4

4-Channel Class-A/B Amplifier 500 Watts RMS Output

4 x 90 Watts @ 4 Ohms
4 x 125 Watts @ 2 Ohms
2 x 250 Watts @ 4 Ohms
Dimensions: (W x H x L)
10.24 x 2.75 x 9.25"
(260 x 70 x 235mm)

XTR750.4

4-Channel Class-A/B Amplifier 750 Watts RMS Output

4 x 135 Watts @ 4 Ohms
4 x 188 Watts @ 2 Ohms
2 x 375 Watts @ 4 Ohms
Dimensions: (W x H x L)
11.5 x 2.75 x 9.25"
(292 x 70 x 235mm)

XTR1000.4

4-Channel Class-A/B Amplifier 1000 Watts RMS Output

4 x 165 Watts @ 4 Ohms
4 x 250 Watts @ 2 Ohms
2 x 500 Watts @ 4 Ohms
Dimensions: (W x H x L)
14.17 x 2.75 x 9.25"
(360 x 70 x 235mm)

XTR1700.4

4-Channel Class-A/B Amplifier 1700 Watts RMS Output

4 x 250 Watts @ 4 Ohms
4 x 425 Watts @ 2 Ohms
2 x 850 Watts @ 4 Ohms
Dimensions: (W x H x L)
17.32 x 2.75 x 9.25"
(440 x 70 x 235mm)

XTR2500.4

4-Channel Class-A/B Amplifier 2500 Watts RMS Output

4 x 400 Watts @ 4 Ohms
4 x 650 Watts @ 2 Ohms
2 x 1250 Watts @ 4 Ohms
Dimensions: (W x H x L)
21.26 x 2.75 x 9.25"
(540 x 70 x 235mm)

XTR 5-Channel AMPLIFIER

The advantage of a five-channel amplifier is that it simplifies the installation process by providing a single solution for powering an entire car audio system. It eliminates the need for multiple amplifiers, saving space and installation complexity.



XTR1500.5
SHOWN

XTR1500.5

5-Channel Multi-Class Amplifier 4-Channels Class A/B + MONO-Block Class-D 1500 Watts RMS Output

N/A x 4 | 1 x 1000 Watts @ 1 Ohms
125W x 4 | 1 x 650 Watts @ 2 Ohms
90W x 4 | 1 x 380 Watts @ 4 Ohms
250W x 2 | 1 x 380 Watts @ 4 Ohms
Dimensions: (W x H x L)
17.32 x 2.75 x 9.25"
(440 x 70 x 235mm)



XTR BASS KNOB
Remote Bass Knob for
XTR Amplifiers

SHARED SPECIFICATIONS

- 2-Ohm Stable
- 4-Ohm Bridgeable
- 1-Ohm Mono Stable (5th Channel ONLY)
- Low Level Inputs
- Phase Shift: 0 - 180°
- Variable Bass Boost: 0 - 18dB
- Subsonic Filter Switch: 25Hz On/Off
- Frequency Response: 15Hz - 250Hz +/- 2.5dB
- Adjustable Input Sensitivity (200mV - 6V)
- Variable Low-Pass Crossover: 40Hz - 300Hz
- 4-Way Protection Circuitry: Thermal, Short Circuit, Under Voltage and Over-Voltage
- Total Harmonic Distortion: 0.05%
- Signal-to-Noise Ratio: >90dB
- Balanced Input (CMRR)
- Damping Factor: >200
- Remote Bass Knob

proud to be **LOUD!**



COBALT CLASS-D AMPLIFIERS

The Orion Cobalt Class D amplifiers, also known as switching amplifiers, are a type of amplifier that have gained popularity due to their high efficiency and compact size. Unlike traditional Class A/B amplifiers, which operate in linear mode and can be less efficient. The main characteristic of Class D amplifiers is their use of pulse-width modulation to rapidly switch the output transistors on and off. This switching process allows the amplifiers to efficiently control the amount of power delivered to the load by varying the width of the pulses. the advantage of the Cobalt Class D amplifiers is achieving efficiency levels of 80% or higher. This efficiency results in less heat generation and longer operating times, making them suitable for various applications.

proud to be **LOUD!**

SHARED SPECIFICATIONS

- 1-Ohm Mono Stable
- Low Level Inputs
- Low Level Outputs
- Phase Shift Switch: 0/180°
- Variable Bass Boost: 0 - 18dB
- Subsonic Filter Switch: 25Hz Off/On
- Linkable amplifier with identical model
- Frequency Response: 10Hz - 500Hz +/- 2.5dB
- Adjustable Input Sensitivity (200mV - 6V)
- Variable Low-Pass Crossover: 15Hz - 400Hz
- 4-Way Protection Circuitry: Thermal, Short Circuit, Under Voltage and Over-Voltage
- Total Harmonic Distortion: 0.1%
- Signal-to-Noise Ratio: >90dB
- Soft Turn-On/Turn-Off
- Remote Bass Knob

GBA2000.1D

MONO-Block Class-D Amplifier
2000 Watts MAX Output

Dimensions: (W x H x L)
9.92 x 2.13 x 7.09"
(252 x 54 x 180mm)

GBA3000.1D

MONO-Block Class-D Amplifier
3000 Watts MAX Output

Dimensions: (W x H x L)
11.77 x 2.13 x 7.09"
(299 x 54 x 180mm)

GBA4500.1D

MONO-Block Class-D Amplifier
4500 Watts MAX Output

Dimensions: (W x H x L)
12.56 x 2.13 x 7.09"
(319 x 54 x 180mm)



COBALT BASS KNOB
Remote Bass Knob for
Cobalt Amplifiers



GBA4500.1D
SHOWN



COBALT CLASS A/B AMPLIFIERS

The Cobalt Class A/B amplifiers are renowned for their exceptional performance quality. These amplifiers have been designed to deliver powerful and clear sound reproduction, making them a top choice for audio enthusiasts. The performance quality of Cobalt amplifiers is further enhanced by their robust construction and high-quality components. These amplifiers are built to withstand the demands of rigorous use and are designed to deliver consistent performance even under challenging conditions. The use of premium materials ensures durability and longevity, making them a worthwhile investment for any audio setup. In addition to their impressive performance, these amplifiers offer versatility in terms of channel configuration. These multi-channel amplifiers allow users to power multiple speakers or subwoofers simultaneously, providing a seamless audio experience.



CBA4500.2

2-Channel Class-A/B Amplifier
4500 Watts MAX Output

Dimensions: (W x H x L)
12.28 x 2.13 x 7.09"
(312 x 54 x 180mm)

CBA2500.2

2-Channel Class-A/B Amplifier
2500 Watts MAX Output

Dimensions: (W x H x L)
9.41 x 2.13 x 7.09"
(239 x 54 x 180mm)

CBA1500.2

2-Channel Class-A/B Amplifier
1500 Watts MAX Output

Dimensions: (W x H x L)
8.22 x 2.13 x 7.09"
(209 x 54 x 180mm)

COBALT MULTI-CHANNEL AMPLIFIERS

COBALT



CBA2000.4

4-Channel Class-A/B Amplifier
2000 Watts MAX Output

Dimensions: (W x H x L)
12.17 x 2.13 x 7.09"
(309 x 54 x 180mm)

CBA2500.4

4-Channel Class-A/B Amplifier
2500 Watts MAX Output

Dimensions: (W x H x L)
16.5 x 2.13 x 7.09"
(419 x 54 x 180mm)

CBA3500.4

4-Channel Class-A/B Amplifier
3500 Watts MAX Output

Dimensions: (W x H x L)
14.12 x 2.13 x 7.09"
(359 x 54 x 180mm)

CBA4500.4

4-Channel Class-A/B Amplifier
4500 Watts MAX Output

Dimensions: (W x H x L)
16.5 x 2.13 x 7.09"
(419 x 54 x 180mm)

SHARED SPECIFICATIONS

- 2-Ohm Stable
- 4-Ohm Bridged Stable
- Low Level Inputs
- Low Level Outputs
- Variable Bass Boost: 0-12dB
- Frequency Response: 10Hz - 30kHz +/- 2.5dB
- Adjustable Input Sensitivity (200mV - 6V)
- Variable Low-Pass Crossover: 40Hz - 500Hz
- Variable High-Pass Crossover: 50Hz - 1.2kHz
- 4-Way Protection Circuitry: Thermal, Short Circuit, Under Voltage and Over-Voltage
- Power and Protection LED Indicator
- Total Harmonic Distortion: 0.1%
- Signal-to-Noise Ratio: >90dB
- Input Impedance: 22K Ohm
- Soft Turn-On/Turn-Off

HCCA151SPLX SHOWN



proud to be **LOUD!**

HCCA SPLX SUBWOOFERS

The Orion HCCA SPLX Woofers: The Epitome of Competition Technology, Performance, and Build Quality. When it comes to car audio systems, enthusiasts seek nothing but the best in terms of sound quality and performance. In this regard, Orion HCCA SPLX Woofers have established themselves as a leading choice among competitors alike. These woofers are a testament to the commitment to innovation, ensuring an unparalleled experience. One of the key features that sets Orion HCCA SPLX Woofers apart is their cutting-edge competition technology. Designed with precision and expertise, these woofers are engineered to deliver exceptional low frequencies. Professional competitors use these woofers and offer unmatched performance that will satisfy even the most discerning ears.



HCCA181SPLX

18" SPLX SERIES SUBWOOFER

Power Handling: 7500 Watts RMS
Peak Handling: 30000 Watts MAX
Frequency Response: 20Hz – 200Hz
690 oz. Triple-Stacked Magnets
Efficiency: 89.1dB
4" High Temp Voice Coils
Mounting Dimensions:
Depth: 18.39" (467mm)
Through Hole: 17.91" (455mm)
Diameter: 18.39" (467mm)
Available in:
Dual 1-ohm

HCCA151SPLX

15" SPLX SERIES SUBWOOFER

Power Handling: 7500 Watts RMS
Peak Handling: 30000 Watts MAX
Frequency Response: 20Hz – 200Hz
690 oz. Triple-Stacked Magnets
Efficiency: 87.81dB
4" High Temp Voice Coils
Mounting Dimensions:
Depth: 14.94" (379.5mm)
Through Hole: 15.08" (383mm)
Diameter: 16.67" (423.5mm)
Available in:
Dual 1-ohm

HCCA121SPLX

12" SPLX SERIES SUBWOOFER

Power Handling: 7500 Watts RMS
Peak Handling: 30000 Watts MAX
Frequency Response: 20Hz – 200Hz
690 oz. Triple-Stacked Magnets
Efficiency: 83.24dB
4" High Temp Voice Coils
Mounting Dimensions:
Depth: 13.64" (346.5mm)
Through Hole: 11.5" (292mm)
Diameter: 12.84" (326.1mm)
Available in:
Dual 1-ohm

SHARED SPECIFICATIONS

- Black Coil Series
- Dual Voice Coils
- High Temp Voice Coils
- Polypropylene Cone Woofer
- Rubber Tri-Radius Symmetrical Surround
- Dual Flat Conex Spiders with Loop Stitched Tinsel Leads
- Enhanced Voice Coil Cooling System
- High-Temperature PAARC (Polyester Amide, Amide Resin Coated) Voice Coil
- Copper Wound Voice Coil on an Aluminum Former
- Reinforced Heavy Duty Cast Basket
- Field Replaceable Cone, Voice Coil and Faraday Cage
- Patent Technology

HCCA154SPL

SHOWN

proud to be **LOUD!**



HCCA151SPL / HCCA152SPL / HCCA154SPL

15" SPL SERIES SUBWOOFER

Power Handling: 5000 Watts RMS
Peak Handling: 20000 Watts MAX
Frequency Response: 21Hz – 100Hz
690 oz. Triple-Stacked Magnets
Efficiency: 86.02dB
4" High Temp Voice Coils
Mounting Dimensions:
Depth: 12.05" (306mm)
Through Hole: 15.07" (383mm)
Diameter: 16.61" (422mm)
Available in:
Dual 4-ohm Dual 2-ohm or Dual 1-ohm



HCCA SPL SUBWOOFERS

The Orion HCCA SPL series is specifically tailored to cater to the needs and desires of car audio enthusiasts and competitors who are in search of unparalleled output and exceptional sound quality for their competitions. This series has been meticulously crafted to possess a remarkably high sensitivity, enabling it to generate substantial bass even with a relatively moderate power delivery. The components incorporated in the SPL series are constructed using nothing but premium materials, ensuring the utmost quality and performance. One exemplary illustration of this is the implementation of Advanced Cooling Technology in the construction of the woofers. This ingenious technology has been employed to prevent overheating during prolonged high-power usage, employing advanced cooling mechanisms like vented pole pieces and heat-dissipating material. The woofers themselves have become a groundbreaking audio component, revolutionizing the realm of car audio systems. One of the standout features that distinguishes the HCCA SPL woofer from its competitors is its patented cast basket design. This innovative design not only contributes to the overall durability of the woofer but also enhances its overall performance.

HCCA

COMPETITION

SHARED SPECIFICATIONS

- Black Coil Series
- Dual Voice Coils
- High Temp Voice Coils
- Polypropylene Cone Woofer
- Rubber Tri-Radius Symmetrical Surround
- Dual Flat Conex Spiders with Loop Stitched Tinsel Leads
- Enhanced Voice Coil Cooling System
- High-Temperature PAARC (Polyester Amide, Amide Resin Coated) Voice Coil
- Copper Wound Voice Coil on an Aluminum Former
- Reinforced Heavy Duty Cast Basket
- Field Replaceable Cone, Voice Coil and Spider Assembly
- Faraday Cage
- Patent Technology

HCCA154 SHOWN

proud to be **LOUD!**



HCCA SUBWOOFERS

The Orion HCCA series are a remarkable addition to the world of car audio systems. Designed with precision and expertise, these woofers offer unparalleled sound quality and performance. The Orion HCCA Woofers ensures durability and strength. Made from high-quality materials, the cast basket provides a solid foundation for the woofer, allowing it to withstand the rigors of daily use. This robust construction also helps in minimizing vibrations and resonance, resulting in cleaner and more accurate sound reproduction. One of the standout features of the Orion HCCA Woofers is the triple stack magnet. This powerful magnet system is designed to provide exceptional magnetic flux density, allowing for greater control over the woofer's movement. With increased control, the woofer can accurately reproduce low-frequency sounds with precision and clarity, enhancing the overall listening experience.

HCCA

COMPETITION

HCCA152 / HCCA154

15" HCCA SERIES SUBWOOFER

Power Handling: 2500 Watts RMS
Peak Handling: 10000 Watts MAX
Frequency Response: 21Hz – 100Hz
445 oz. Triple-Stacked Magnets
Efficiency: 87.2dB
4" High Temp Voice Coils
Mounting Dimensions:
Depth: 11.575" (294mm)
Through Hole: 15.07" (383mm)
Diameter: 16.61" (422mm)
Available in:
Dual 4-ohm or Dual 2-ohm

HCCA122 / HCCA124

12" HCCA SERIES SUBWOOFER

Power Handling: 2500 Watts RMS
Peak Handling: 10000 Watts MAX
Frequency Response: 24Hz – 100Hz
445 oz. Triple-Stacked Magnets
Efficiency: 84.22dB
4" High Temp Voice Coils
Mounting Dimensions:
Depth: 10.28" (261mm)
Through Hole: 11.5" (292mm)
Diameter: 12.78" (325mm)
Available in:
Dual 4-ohm or Dual 2-ohm

HCCA102 / HCCA104

10" HCCA SERIES SUBWOOFER

Power Handling: 2000 Watts RMS
Peak Handling: 8000 Watts MAX
Frequency Response: 32Hz – 100Hz
264 oz. Triple-Stacked Magnets
Efficiency: 86.51dB
3" High Temp Voice Coils
Mounting Dimensions:
Depth: 8.425" (214mm)
Through Hole: 9.37" (238mm)
Diameter: 10.57" (268.5mm)
Available in:
Dual 4-ohm or Dual 2-ohm

SHARED SPECIFICATIONS

- Black Coil Series
- Dual Voice Coils
- High Temp Voice Coils
- Polypropylene Cone Woofer
- Rubber Tri-Radius Symmetrical Surround
- Dual Flat Conex Spiders with Loop Stitched Tinsel Leads
- Enhanced Voice Coil Cooling System
- High-Temperature PAARC (Polyester Amide, Amide Resin Coated) Voice Coil
- Copper Wound Voice Coil on an Aluminum Former
- Reinforced Heavy Duty Cast Basket
- Field Replaceable Cone, Voice Coil and Spider Assembly
- Faraday Cage
- Patent Technology

XTRPRO154D SHOWN

proud to be **LOUD!**

XTR PRO SUBWOOFERS

When you think of the XTR PRO Subwoofer Series, think of powerhouses, It's like the heavyweight champions of the sound realm, delivering deep and powerful bass that you can feel in your bones. But it's not just about the boom; it's about the precision, the accuracy that makes every note crystal clear, every beat perfectly timed. These subwoofers are built to last through all the musical adventures you throw at them. Whether it's the thumping bass of your favorite hip-hop track or the delicate melodies of a classical composition, these subwoofers handle it all with grace. It's like they have a sixth sense for understanding sound and turning it into an immersive experience that wraps around you. When you power up the XTRPRO subwoofers, you're not just listening to music – you're diving into a world of sound that's richer, deeper, and more captivating than you've ever experienced before.



SHARED SPECIFICATIONS

- Dual Voice Coils
- Black Coil Series
- Tri-cooling system
- Polypropylene Dust Cap
- Dual Interlaced Spiders with Loop Stitched Tinsel Leads
- Enhanced Voice Coil Cooling System
- UV and Moisture Treated Paper Cone
- Symmetrical tuned long-throw surround
- Copper Wound Voice Coil on an Aluminum Former
- Reinforced Heavy Duty Cast Basket
- Field Replaceable Cone, Voice Coil and Spider Assembly
- Advanced forced convection cooling system
- Patent Technology

XTRPRO152D / XTRPRO154D

15" XTR PRO SERIES SUBWOOFER

Power Handling: 2000 Watts RMS
Peak Handling: 8000 Watts MAX
Frequency Response: 28Hz – 500Hz
373 oz. Triple Stack Ceramic Magnets
Efficiency: 90.9dB
3" High Temp Voice Coils
Mounting Dimensions:
Depth: 9.59" (244mm)
Through Hole: 14.33" (364mm)
Diameter: 15.83" (402mm)
Available in:
Dual 4-ohm or Dual 2-ohm

XTRPRO122D /XTRPRO124D

12" XTR PRO SERIES SUBWOOFER

Power Handling: 1500 Watts RMS
Peak Handling: 6000 Watts MAX
Frequency Response: 32Hz – 500Hz
176 oz. Double Stack Ceramic Magnets
Efficiency: 88.6dB
3" High Temp Voice Coils
Mounting Dimensions:
Depth: 7.70" (196mm)
Through Hole: 11.18" (284mm)
Diameter: 12.68" (322mm)
Available in:
Dual 4-ohm or Dual 2-ohm

XTRPRO102D / XTRPRO104D

10" XTR PRO SERIES SUBWOOFER

Power Handling: 1250 Watts RMS
Peak Handling: 5000 Watts MAX
Frequency Response: 35Hz – 500Hz
133 oz. Double Stack Ceramic Magnets
Efficiency: 87.8dB
2.5" High Temp Voice Coils
Mounting Dimensions:
Depth: 7.27" (185mm)
Through Hole: 9.25" (235mm)
Diameter: 10.67" (271mm)
Available in:
Dual 4-ohm or Dual 2-ohm

XTR124D SHOWN



XTR102D / XTR104D

10" XTR SERIES SUBWOOFER

Power Handling: 500 Watts RMS
Peak Handling: 2000 Watts MAX
Frequency Response: 25Hz – 250Hz
44 oz. Ceramic Magnet
Efficiency: 83.7dB
2" High Temp Voice Coils
Mounting Dimensions:
Depth: 5.31" (135mm)
Through Hole: 9.1" (230mm)
Diameter: 10.67" (271mm)
Available in:
Dual 2-ohm or Dual 4-ohm

XTR122D / XTR124D

12" XTR SERIES SUBWOOFER

Power Handling: 600 Watts RMS
Peak Handling: 2400 Watts MAX
Frequency Response: 20Hz – 250Hz
55 oz. Double Stack Ceramic Magnets
Efficiency: 87.38dB
2" High Temp Voice Coils
Mounting Dimensions:
Depth: 6.22" (158mm)
Through Hole: 10.91" (277mm)
Diameter: 12.56" (319mm)
Available in:
Dual 2-ohm or Dual 4-ohm

XTR152D / XTR154D

15" XTR SERIES SUBWOOFER

Power Handling: 750 Watts RMS
Peak Handling: 3000 Watts MAX
Frequency Response: 20Hz – 250Hz
176 oz. Double Stack Ceramic Magnets
Efficiency: 87.3dB
3" High Temp Voice Coils
Mounting Dimensions:
Depth: 8.54" (217mm)
Through Hole: 13.59" (345mm)
Diameter: 15.43" (392mm)
Available in:
Dual 2-ohm or Dual 4-ohm

XTR SUBWOOFERS

When it comes to audio systems, achieving optimal sound quality and performance is paramount. This is where ORION XTR woofers come into play, revolutionizing the audio industry with their cutting-edge technology. With features like a proprietary stamped basket, ceramic magnet, and treated cone, these woofers deliver an unparalleled audio experience. One of the standout features of ORION XTR woofers is their proprietary stamped basket. This unique design provides exceptional rigidity and strength, allowing for precise control over the speaker's movement. By minimizing unwanted vibrations and resonances, the stamped basket ensures that the sound produced is clean, accurate, and free from distortions. This results in a more immersive listening experience, where every beat and note can be heard with remarkable clarity.



SHARED SPECIFICATIONS

- Dual Voice Coils
- Ceramic Magnets
- PVC Magnet Protection
- Polypropylene Dust Cap
- Kapton voice coil former
- PVC Proprietary Trim Ring
- High Temp Copper Voice Coils
- Spring Loaded Push Terminals
- Proprietary Stamped Steel Basket
- Enhanced Voice Coil Cooling System
- UV and Moisture Treated Paper Cone
- Santoprene Surround for Linear Control
- Oversize Nitrile-butadiene rubber surround
- Steel back plate/pole piece T yoke assembly
- Interlaced Conex Spider with Stitched and Looped Tinsel Leads



XTR8SWD2 / XTR8SWD4

8" XTR SHALLOW SUBWOOFER

Power Handling: 300 Watts RMS
Peak Handling: 1200 Watts MAX
Frequency Response: 40Hz – 300Hz
44 oz. Ceramic Magnet
Efficiency: 83dB
2" High Temp Voice Coils
Mounting Dimensions:
Depth: 2.76" (83mm)
Through Hole: 7.09" (180mm)
Diameter: 8.58" (218mm)
Available in:
Dual 2-ohm or Dual 4-ohm

XTR10SWD2 / XTR10SWD4

10" XTR SHALLOW SUBWOOFER

Power Handling: 400 Watts RMS
Peak Handling: 1600 Watts MAX
Frequency Response: 35Hz – 300Hz
53 oz. Ceramic Magnet
Efficiency: 83dB
2.5" High Temp Voice Coils
Mounting Dimensions:
Depth: 3.43" (87mm)
Through Hole: 9.09" (231mm)
Diameter: 10.83" (275mm)
Available in:
Dual 2-ohm or Dual 4-ohm

XTR12SWD2 / XTR12SWD4

12" XTR SHALLOW SUBWOOFER

Power Handling: 500 Watts RMS
Peak Handling: 2000 Watts MAX
Frequency Response: 28Hz – 300Hz
56 oz. Ceramic Magnet
Efficiency: 85dB
3" High Temp Voice Coils
Mounting Dimensions:
Depth: 3.58" (91mm)
Through Hole: 11.02" (280mm)
Diameter: 12.76" (324mm)
Available in:
Dual 2-ohm or Dual 4-ohm

XTR SHALLOW WOOFERS

The XTR PRO Shallow Woofers deliver robust, high-quality bass in a slim, space-saving design—ideal for cars with limited room. Crafted with advanced materials, these woofers provide deep, punchy bass that matches the performance of larger subs, with high power handling for consistent low-frequency output.

With durable construction, reinforced cones, and a rugged suspension system, the XTR PRO Shallow Woofers ensure reliable, peak performance even under intense conditions. Perfect for any setup, they embody Orion's commitment to quality, offering powerful bass without compromising on space. Embrace the sound and depth of the Orion XTR PRO Shallow Woofers and upgrade your audio experience.



XTR12SWD2 SHOWN

SHARED SPECIFICATIONS

- Dual Voice Coils
- Ceramic Magnets
- Polypropylene Dust Cap
- Kapton voice coil former
- PVC Proprietary Trim Ring
- High Temp Copper Voice Coils
- Spring Loaded Push Terminals
- Proprietary Stamped Steel Basket
- Enhanced Voice Coil Cooling System
- Santoprene Surround for Linear Control
- Oversize Nitrile-butadiene rubber surround

ENCLOSURES

COBALT ENCLOSURES

Get ready to experience unmatched sound quality and durability with the Orion enclosures. Engineered for optimal bass performance, these enclosures strike the perfect balance of sound clarity and depth, allowing your subwoofers to reach their full potential. Constructed from high-quality, reinforced materials, each enclosure is built to withstand intense audio conditions while delivering long-lasting durability. Precision-tuned to reduce resonance, they provide tight, powerful bass that brings every beat and note to life. Designed for space efficiency, these enclosures fit seamlessly into a variety of vehicle types and setups without compromising on sound quality, making them the ideal choice whether you're upgrading an existing audio system or starting fresh. The Orion enclosures are poised to redefine the car audio experience, making Orion a go-to brand for true sound enthusiasts. Stay tuned for the launch and elevate your audio setup with the expertly crafted performance and style of Orion.



SHARED SPECIFICATIONS

- Build-in Amplified Enclosure
- Down-Firing Sealed Enclosure
- Enclosure Impedance: 4-Ohm
- Nickel Plated Terminal Blocks
- Hi & Low Level Inputs
- Bass Boost: 0 - + 12 dB
- Low Pass Crossover: 50Hz - 200Hz
- Built-in Auto ON/OFF Sensor
- Bustyl Rubber Surround

CPE80

8" ACTIVE DOWN FIRE ENCLOSURE

Power Handling: 200 Watts RMS
Peak Handling: 600 Watts MAX
Frequency Response: 32Hz - 500Hz
Sensitivity: 90dB
Dimensions: 17.6 x 6.02 x 9.02"

CPE100

10" ACTIVE DOWN FIRE ENCLOSURE

Power Handling: 400 Watts RMS
Peak Handling: 1200 Watts MAX
Frequency Response: 32Hz - 500Hz
Sensitivity: 92dB
Dimensions: 19.02 x 6.02 x 12.99"

CPE120

12" ACTIVE DOWN FIRE ENCLOSURE

Power Handling: 500 Watts RMS
Peak Handling: 1500 Watts MAX
Frequency Response: 26Hz - 500Hz
Sensitivity: 90dB
Dimensions: 21.02 x 7.01 x 14.2"

COBALT**PASSIVE DOWNFIRE**

CDF12

12" PASSIVE DOWN FIRE ENCLOSURE

Power Handling: 500 Watts RMS
Peak Handling: 1500 Watts MAX
Frequency Response: 26Hz - 500Hz
Sensitivity: 92dB
Dimensions: 20.47 x 6.7 x 14.1"

CDF10

10" PASSIVE DOWN FIRE ENCLOSURE

Power Handling: 400 Watts RMS
Peak Handling: 1200 Watts MAX
Frequency Response: 30Hz - 500Hz
Sensitivity: 95dB
Dimensions: 20.47 x 6.7 x 14.1"

CDF8

8" PASSIVE DOWN FIRE ENCLOSURE

Power Handling: 200 Watts RMS
Peak Handling: 600 Watts MAX
Frequency Response: 32Hz - 500Hz
Sensitivity: 90dB
Dimensions: 12.09 x 5.7 x 9.45"



PORTED ENCLOSURES

XTP8

8" PORTED ENCLOSURE

Power Handling: 350 Watts RMS
Peak Handling: 1400 Watts MAX
Frequency Response: 27Hz - 200Hz
Single Terminal w/ 4-ohm Impedance

XTP6

6" PORTED ENCLOSURE

Power Handling: 200 Watts RMS
Peak Handling: 800 Watts MAX
Frequency Response: 28Hz - 500Hz
Single Terminal w/ 4-ohm Impedance

**COMING
SOON**

CBW124D SHOWN

CBW124S / CBW124D 12" COBALT SERIES SUBWOOFER

Power Handling: 400 Watts RMS
Peak Handling: 1600 Watts MAX
Frequency Response: 20Hz – 300Hz
40 Oz. Double Stack Ceramic Magnets
Efficiency: 87dB
2" High Temp Voice Coils
Mounting Dimensions:
Depth: 5.59" (142mm)
Through Hole: 11.81" (300mm)
Diameter: 12.32" (313mm)
Available in:
Single 4-ohm / Dual 4-ohm

CBW104S / CBW104D 10" COBALT SERIES SUBWOOFER

Power Handling: 300 Watts RMS
Peak Handling: 1200 Watts MAX
Frequency Response: 20Hz – 300Hz
40 Oz. Double Stack Ceramic Magnets
Efficiency: 85dB
2" High Temp Voice Coils
Mounting Dimensions:
Depth: 5.31" (135mm)
Through Hole: 9.69" (246mm)
Diameter: 10.12" (257mm)
Available in:
Single 4-ohm / Dual 4-ohm

COBALT



COBALT SUBWOOFERS

The Cobalt Subwoofers have undergone a remarkable transformation, emerging as smarter, stronger, and more dynamic bass companions. They feature an innovative coil that handles high temperatures with ease, maintaining top-notch performance even during intense musical moments. With these subwoofers, you're not just listening to music; you're experiencing it in a whole new way. They provide a thrilling ride through vibrant beats and powerful bass that resonates deep within. Offering both single and dual voice coil options, they empower you to customize your audio setup. In the world of car audio enthusiasts, the Cobalt Subwoofers shine as symbols of excellence, delivering a sonic journey that's both captivating and electrifying. These subwoofers don't just play music; they elevate it to an art form, connecting you with the true essence of sound.

SHARED SPECIFICATIONS

- Polypropylene Dust Cap
- Interlaced Conex Spider
- 3-stage vented back plate
- Nickel Plated Push Terminals
- Stitched and Looped Tinsel Leads
- High Temperature Copper Voice Coil with Kapton Former
- Enhanced Voice Coil Cooling System
- UV and Moisture Treated Paper Cone
- Heavy Gauged Stamped Steel Basket
- Oversize Nitrile-Butadiene Rubber Surround

HCCA HIGH-EFFICIENCY MIDRANGE SPEAKERS

The HCCA HIGH-EFFICIENCY Midrange Speaker stands as a pinnacle of audio engineering. With its cast basket and neodymium magnet, it promises unparalleled performance that defines excellence. Born from our commitment to innovation, these midrange speakers deliver an exceptional audio experience. The cast basket ensures robustness, while the neodymium magnet infuses power and precision. Moreover, the CCAW voice coil further refines sound quality, ensuring every musical nuance is captured. Boasting high efficiency, these speakers truly shine in optimizing energy use without compromising on sonic brilliance. Whether you're a music enthusiast or a professional, the HCCA HIGH-EFFICIENCY Midrange Speaker encapsulates the art of sound, presenting a harmonious blend of technology and craftsmanship.

HCCA1052NHP / HCCA1054NHP

10" PRO AUDIO MIDRANGE SPEAKER

Power Handling: 700 Watts RMS
Peak Handling: 2800 Watts MAX
Frequency Response: 116Hz – 5.5kHz
Efficiency: 103.9dB
3" CCAW Voice Coil
Mounting Dimensions:
Depth: 3.86" (98mm)
Through Hole: 9.21" (234mm)
Diameter: 10.43" (265mm)
Available in: 2-ohm or 4-ohm
Sold Individually

HCCA852NHP / HCCA854NHP

8" PRO AUDIO MIDRANGE SPEAKERS

Power Handling: 650 Watts RMS
Peak Handling: 2600 Watts MAX
Frequency Response: 107Hz – 9kHz
Efficiency: 95.8dB
2.5" CCAW Voice Coil
Mounting Dimensions:
Depth: 3.19" (81mm)
Through Hole: 7.24" (184mm)
Diameter: 8.46" (215mm)
Available in: 2-ohm or 4-ohm
Sold as Pair

HCCA652NHP / HCCA654NHP

6.5" PRO AUDIO MIDRANGE SPEAKERS

Power Handling: 450 Watts RMS
Peak Handling: 1800 Watts MAX
Frequency Response: 120Hz – 12kHz
Efficiency: 99.8dB
2" CCAW Voice Coil
Mounting Dimensions:
Depth: 2.7" (68.5mm)
Through Hole: 5.75" (146mm)
Diameter: 7" (178mm)
Available in: 2-ohm or 4-ohm
Sold as Pair



proud to be **LOUD!**

SHARED SPECIFICATIONS

- Neodymium Magnet
- Nomex Progressive Spider
- Loop Stitched Tinsel Leads
- Billet Aluminum Phase Plug
- Spring Loaded Push Terminals
- Proprietary Coated Cast Basket
- High Temperature CCAW Voice Coil
- UV and Moisture Treated Cloth Accordion Surround
- UV and Moisture Treated Non Pressed Paper Cone

HCCA
COMPETITION

HCCA BULLET PRO MIDRANGE SPEAKERS

The Orion HCCA Bullet Pro Midrange speakers are a high-performance audio solution designed to deliver exceptional midrange sound reproduction. These speakers boast a cast basket for stability and durability, complemented by a neodymium magnet for strong magnetic properties in a compact form. Their push-down nickel-plated terminals ensure reliable and corrosion-resistant connections. With flat loop stitched tinsel leads for efficient power handling, these speakers are built to last. The progressive Nomex spider enhances control over speaker movement, particularly at higher volumes, while the cloth accordion surround provides flexibility and durability. Overall, the Orion HCCA Midrange Pro speakers are a top choice for car audio enthusiasts seeking clear and powerful midrange audio performance.

HCCA102N / HCCA104N 10" PRO AUDIO MIDRANGE SPEAKER

Power Handling: 550 Watts RMS
Peak Handling: 2200 Watts MAX
Frequency Response: 105Hz – 12kHz
Efficiency: 101.4dB
3" CCAW Voice Coil
Mounting Dimensions:
Depth: 3.9" (99mm)
Through Hole: 9.21" (234mm)
Diameter: 10.24" (260mm)
Available in: 2-ohm or 4-ohm
Sold Individually

HCCA82N / HCCA84N 8" PRO AUDIO MIDRANGE SPEAKERS

Power Handling: 500 Watts RMS
Peak Handling: 2000 Watts MAX
Frequency Response: 110Hz – 12kHz
Efficiency: 99.9dB
2.5" CCAW Voice Coil
Mounting Dimensions:
Depth: 3.19" (81mm)
Through Hole: 7.17" (182mm)
Diameter: 8.23" (209mm)
Available in: 2-ohm or 4-ohm
Sold as Pair

HCCA62N / HCCA64N 6.5" PRO AUDIO MIDRANGE SPEAKERS

Power Handling: 350 Watts RMS
Peak Handling: 1400 Watts MAX
Frequency Response: 130Hz – 12kHz
Efficiency: 99dB
1.5" CCAW Voice Coil
Mounting Dimensions:
Depth: 2.65" (67.2mm)
Through Hole: 5.75" (146mm)
Diameter: 6.85" (174mm)
Available in: 2-ohm or 4-ohm
Sold as Pair

HCCA DUST CAP PRO MIDRANGE SPEAKERS

The HCCA Dust Cap Pro Midrange Speakers is a true masterpiece in the realm of sound. With its cast basket and neodymium magnet, this midrange delivers outstanding performance that's hard to match. Created with audio innovation, these midrange speakers is a true game-changer. The cast basket not only enhances its durability but also contributes to its overall strength, ensuring it can handle the demands of high-quality music. The neodymium magnet adds a touch of magic, enhancing its projection and power. To top it off, the CCAW voice coil provides an extra layer of precision to the sound, making every note and beat come alive. Whether you're a music lover or a audiophile seeking top-tier audio, the HCCA Dust Cap Pro Midrange Speaker is a testament to our commitment to excellence and the art of sound.

HCCA102NDC / HCCA104NDC 10" PRO DUST CAP MIDRANGE SPEAKER

Power Handling: 550 Watts RMS
Peak Handling: 2200 Watts MAX
Frequency Response: 105Hz – 12kHz
Efficiency: 101.3dB
3" CCAW Voice Coil
Mounting Dimensions:
Depth: 3.9" (99mm)
Through Hole: 9.21" (234mm)
Diameter: 10.24" (260mm)
Available in: 2-ohm or 4-ohm
Sold Individually

HCCA82NDC / HCCA84NDC 8" PRO DUST CAP MIDRANGE SPEAKERS

Power Handling: 500 Watts RMS
Peak Handling: 2000 Watts MAX
Frequency Response: 110Hz – 12kHz
Efficiency: 99.9dB
2.5" CCAW Voice Coil
Mounting Dimensions:
Depth: 3.19" (81mm)
Through Hole: 7.17" (182mm)
Diameter: 8.23" (209mm)
Available in: 2-ohm or 4-ohm
Sold as Pair

HCCA62NDC / HCCA64NDC 6.5" PRO DUST CAP MIDRANGE SPEAKERS

Power Handling: 350 Watts RMS
Peak Handling: 1400 Watts MAX
Frequency Response: 140Hz – 12kHz
Efficiency: 97dB
1.5" CCAW Voice Coil
Mounting Dimensions:
Depth: 2.65" (67.2mm)
Through Hole: 5.75" (146mm)
Diameter: 6.85" (174mm)
Available in: 2-ohm or 4-ohm
Sold as Pair

SHARED SPECIFICATIONS

- Neodymium Magnet
- Nomex Progressive Spider
- Loop Stitched Tinsel Leads
- Spring Loaded Push Terminals
- Proprietary Coated Cast Basket
- High Temperature CCAW Voice Coil
- UV and Moisture Treated Non Pressed Paper Cone
- UV and Moisture Treated Cloth Accordion Surround

HCCA
COMPETITION

ORIONCARAUDIO.COM

proud to be **LOUD!**

- Neodymium Magnet
- Nomex Progressive Spider
- Loop Stitched Tinsel Leads
- Billet Aluminum Phase Plug
- Spring Loaded Push Terminals
- Proprietary Coated Cast Basket
- High Temperature CCAW Voice Coil
- UV and Moisture Treated Non Pressed Paper Cone
- UV and Moisture Treated Cloth Accordion Surround

SHARED SPECIFICATIONS

XTR BULLET PRO AUDIO SPEAKERS

XTR High-Efficiency Midrange speakers use a variety of technologies. The High-Efficiency Midrange speakers feature cutting-edge components like a billet aluminum bullet phase plug, a robust cast basket, a high-temperature CCAW voice coil, and a wide frequency response. These elements work in harmony to enhance sound quality, reduce distortion, ensure durability, and accommodate a broad range of music genres. Additionally, the high sensitivity makes them ideal for mobile audio systems, producing ample sound despite their size. The wide frequency response of these speakers is a key advantage. It means that they can faithfully reproduce an extensive range of frequencies accommodating various music genres and intricate musical compositions.

XTX1052 / XTX1054

10" XTR MIDRANGE SPEAKER

Power Handling: 500 Watts RMS
Peak Handling: 2000 Watts MAX
Frequency Response: 100Hz – 6kHz
120 Oz Strontium Ferrite Magnet
Efficiency: 99.9dB
3" CCAW Voice Coil
Mounting Dimensions:
Depth: 4.21" (107mm)
Through Hole: 9.02" (229mm)
Diameter: 10.24" (260mm)
Available in: 2-ohm or 4-ohm
Sold Individually

XTX852 / XTX854

8" XTR MIDRANGE SPEAKERS

Power Handling: 400 Watts RMS
Peak Handling: 1600 Watts MAX
Frequency Response: 130Hz – 12kHz
88 Oz Strontium Ferrite Magnet
Efficiency: 98.5dB
2" CCAW Voice Coil
Mounting Dimensions:
Depth: 3.58" (91mm)
Through Hole: 7.24" (184mm)
Diameter: 8.46" (215mm)
Available in: 2-ohm or 4-ohm
Sold as Pair

XTX652 / XTX654

6.5" XTR MIDRANGE SPEAKERS

Power Handling: 350 Watts RMS
Peak Handling: 1400 Watts MAX
Frequency Response: 140Hz – 12kHz
20 Oz Strontium Ferrite Magnet
Efficiency: 97dB
1.5" CCAW Voice Coil
Mounting Dimensions:
Depth: 2.96" (75.2mm)
Through Hole: 5.75" (146mm)
Diameter: 7" (178mm)
Available in: 2-ohm or 4-ohm
Sold as Pair



- Strontium Ferrite Magnet
- Flat Stitched Tinsel Leads
- Nomex Progressive Spider
- Billet Aluminum Phase Plug
- Spring Loaded Push Terminals
- Proprietary Coated Cast Basket
- High Temperature CCAW Voice Coil
- UV and Moisture Treated Non Pressed Paper Cone
- UV and Moisture Treated Cloth Accordion Surround

XTR DUST CAP PRO AUDIO SPEAKERS

The DC Midrange Speakers are designed for enduring audio excellence. Their sturdy foundation lies in a cast basket forged from molten metal, ensuring a resilient and vibration-resistant frame. This single-piece metal construction not only enhances structural integrity but also shields delicate components like the voice coil, prolonging the speaker's lifespan while improving sound quality. Adding to their protective features, these speakers boast a treated paper cone and dust cap, preventing debris from compromising internal components.

XTX1052DC / XTX1054DC

10" XTR MIDRANGE SPEAKER

Power Handling: 500 Watts RMS
Peak Handling: 2000 Watts MAX
Frequency Response: 100Hz – 6kHz
120 Oz Strontium Ferrite Magnet
Efficiency: 99.9dB
3" CCAW Voice Coil
Mounting Dimensions:
Depth: 4.21" (107mm)
Through Hole: 9.02" (229mm)
Diameter: 10.24" (260mm)
Available in: 2-ohm or 4-ohm
Sold Individually

XTX852DC / XTX854DC

8" XTR MIDRANGE SPEAKERS

Power Handling: 400 Watts RMS
Peak Handling: 1600 Watts MAX
Frequency Response: 130Hz – 12kHz
88 Oz Strontium Ferrite Magnet
Efficiency: 98.5dB
2" CCAW Voice Coil
Mounting Dimensions:
Depth: 3.58" (91mm)
Through Hole: 7.24" (184mm)
Diameter: 8.46" (215mm)
Available in: 2-ohm or 4-ohm
Sold as Pair

XTX652DC / XTX654DC

6.5" XTR MIDRANGE SPEAKERS

Power Handling: 350 Watts RMS
Peak Handling: 1400 Watts MAX
Frequency Response: 140Hz – 12kHz
20 Oz Strontium Ferrite Magnet
Efficiency: 97dB
1.5" CCAW Voice Coil
Mounting Dimensions:
Depth: 2.96" (75.2mm)
Through Hole: 5.75" (146mm)
Diameter: 7" (178mm)
Available in: 2-ohm or 4-ohm
Sold as Pair

SHARED SPECIFICATIONS

- Strontium Ferrite Magnet
- Flat Stitched Tinsel Leads
- Nomex Progressive Spider
- Spring Loaded Push Terminals
- Proprietary Coated Cast Basket
- UV and Moisture Treated Dust Cap
- High Temperature CCAW Voice Coil
- UV and Moisture Treated Non Pressed Paper Cone
- UV and Moisture Treated Cloth Accordion Surround

proud to be **LOUD!**

XTR SHALLOW NEO PRO AUDIO SPEAKERS

Orion's Shallow High-Efficiency Midrange Speakers are not just speakers. They are a gateway to an extraordinary sonic realm that promises an unparalleled fusion of power and clarity. These speakers transcend their physical form, transforming your audio experience into something truly transformative. With a carefully designed 4-ohm impedance, these speakers are built to last. Their inner workings are a testament to precision, with a robust high-temperature CCAW voice coil and an influential neodymium magnet. This dynamic combination ensures unwavering durability and exceptional quality, no matter what challenges your journey may bring. With meticulous craftsmanship, unwavering durability, and exceptional quality, these speakers guarantee that your musical encounters will be nothing short of extraordinary. So, embark on this audio journey and let these speakers be your guide to a realm of sound that is both captivating and transformative.



- Shallow Basket
- Poly Cotton Spider
- Neodymium Magnet
- Flat Stitched Tinsel Leads
- Billet Aluminum Phase Plug
- Riveted Plated Spaded Terminals
- High Temperature CCAW Voice Coil
- UV Treated Non Pressed Paper Cone
- UV Treated Accordion Cloth Surround
- Heavy Gauged Proprietary Stamped Steel Basket

XTR802NEO / XTR804NEO **8" XTR MIDRANGE SPEAKERS**

Power Handling: 350 Watts RMS
Peak Handling: 1400 Watts MAX
Frequency Response: 128Hz – 10kHz
Efficiency: 92.5dB
1.5" CCAW Voice Coil
Mounting Dimensions:
Depth: 2.66" (67.5mm)
Through Hole: 7.26" (184.5mm)
Diameter: 8.24" (209.4mm)
Available in: 2-ohm or 4-ohm
Sold as Pair

XTR652NEO / XTR654NEO **6.5" XTR MIDRANGE SPEAKERS**

Power Handling: 300 Watts RMS
Peak Handling: 1200 Watts MAX
Frequency Response: 128Hz – 10kHz
Efficiency: 91.7dB
1.5" CCAW Voice Coil
Mounting Dimensions:
Depth: 2.96" (75.2mm)
Through Hole: 5.75" (146mm)
Diameter: 7" (178mm)
Available in: 2-ohm or 4-ohm
Sold as Pair

XTR SHALLOW FERRITE PRO AUDIO SPEAKERS

The Orion XTR SHALLOW Series speakers are all about turning up the volume – in the most fantastic way! These speakers are built tough, ready to take on any challenge you throw their way, and they don't flinch. Whether you're cranking up your favorite jams to the max or pushing their limits, these speakers handle it all without even breaking a sweat. Their durability is matched by their impressive performance, thanks to advanced speaker engineering. But it's not just about the sound; it's also about making a statement. The XTR SHALLOW Series speakers are designed to not only impress your ears but also catch your eyes. And with their high efficiency, they make the most out of every bit of power, ensuring your music shines bright. So, when you choose the Orion XTR SHALLOW Series speakers, you're not just getting speakers you're getting a ticket to an audio experience that's both powerful and captivating.



XSM805SL **8" XTR MIDRANGE SPEAKERS**

Power Handling: 350 Watts RMS
Peak Handling: 1400 Watts MAX
Frequency Response: 130Hz – 20kHz
Efficiency: 98dB
2" CCAW Voice Coil
110 Oz Strontium Ferrite Magnet
Mounting Dimensions:
Depth: 3.6" (91mm)
Through Hole: 7.15" (182mm)
Diameter: 8.25" (210mm)
Available in: 4-ohm
Sold as Pair

XSM655SL **6.5" XTR MIDRANGE SPEAKERS**

Power Handling: 300 Watts RMS
Peak Handling: 1200 Watts MAX
Frequency Response: 150Hz – 10kHz
Efficiency: 97.2dB
1.5" CCAW Voice Coil
66 Oz Strontium Ferrite Magnet
Mounting Dimensions:
Depth: 2.52" (64mm)
Through Hole: 5.59" (142mm)
Diameter: 6.54" (166mm)
Available in: 4-ohm
Sold as Pair

SHARED SPECIFICATIONS

- Slim Depth Basket
- Poly Cotton Spider
- Strontium Ferrite Magnet
- Riveted Spaded Terminals
- Billet Aluminum Phase Plug
- High Temperature CCAW Voice Coil
- Heavy Gauged Stamped Steel Basket
- UV Treated Non Pressed Paper Cone
- UV Treated Accordion Cloth Surround

proud to be LOUD!

XTR PRO MIDRANGE AUDIO SPEAKERS

The Orion Midrange Speakers are renowned for impressive performance. Available in sizes from 6.5 inches to 10 inches, these speakers feature a paper cone designs known for their natural sound reproduction. They are lightweight and rigid, which allows them to move quickly and accurately, producing clear, detailed sound. Their versatile sizing allows for various installation options, making them suitable for enhancing audio quality. Combining the Orion Mid-range Speakers with a cast basket for vibration can further improve their performance. A cast basket is made of a solid piece of metal, which makes it more rigid and resistant to vibration than a stamped steel basket. This can help to improve the speakers' clarity and accuracy by reducing distortion caused by vibration.



XPM1052MBF / XPM1054MBF

10" MIDRANGE SPEAKER

Power Handling: 750 Watts RMS
Peak Handling: 3000 Watts MAX
Frequency Response: 140Hz – 5.5kHz
128 Oz Strontium Ferrite Magnet
Efficiency: 101.4dB
3" CCAW Voice Coil
Mounting Dimensions:
Depth: 4.41" (112mm)
Through Hole: 9.02" (229mm)
Diameter: 10.43" (265mm)
Available in: 2-ohm or 4-ohm
Sold Individually

XPM852MBF / XPM854MBF

8" MIDRANGE SPEAKERS

Power Handling: 500 Watts RMS
Peak Handling: 2000 Watts MAX
Frequency Response: 200Hz – 6kHz
92 Oz Strontium Ferrite Magnet
Efficiency: 100.2dB
2.5" CCAW Voice Coil
Mounting Dimensions:
Depth: 3.84" (97.5mm)
Through Hole: 7.24" (184mm)
Diameter: 8.43" (214mm)
Available in: 2-ohm or 4-ohm
Sold as Pair

XPM652MBF / XPM654MBF

6.5" MIDRANGE SPEAKERS

Power Handling: 400 Watts RMS
Peak Handling: 1600 Watts MAX
Frequency Response: 230Hz – 9kHz
54 Oz Strontium Ferrite Magnet
Efficiency: 99.1dB
2" CCAW Voice Coil
Mounting Dimensions:
Depth: 3.28" (83.2mm)
Through Hole: 5.75" (146mm)
Diameter: 7" (178mm)
Available in: 2-ohm or 4-ohm
Sold as Pair

- Poly Cotton Spider
- Plated Spaded Terminals
- Strontium Ferrite Magnet
- Billet Aluminum Phase Plug
- Proprietary Coated Cast Basket
- High Temperature CCAW Voice Coil
- UV and Moisture Treated Non Pressed Paper Cone
- UV and Moisture Treated Cloth Accordion Surround

COBALT MID-BASS PRO AUDIO SPEAKERS

The COBALT MID-BASS is a high-performance speaker that features a poly cotton cone with a Nomex spider. This cone provides good linearity and damping, resulting in accurate sound reproduction. The speaker also has a high-temperature voice coil former. This voice coil can handle high power levels without distortion.



CMB1054PRO

10" MID-BASS SPEAKER

Power Handling: 350 Watts RMS
Peak Handling: 1500 Watts MAX
Frequency Response:
90Hz – 6kHz
41 Oz Strontium Ferrite Magnet
Efficiency: 98.1dB
2" Voice Coil
Mounting Dimensions:
Depth: 4.09" (104mm)
Through Hole:
Diameter: 10.12" (257mm)
Available in: 4-ohm
Sold Individually

CMB85PRO

8" MID-BASS SPEAKER

Power Handling: 175 Watts RMS
Peak Handling: 700 Watts MAX
Frequency Response:
75Hz – 7kHz
20 Oz Strontium Ferrite Magnet
Efficiency: 94dB
1.5" Voice Coil
Mounting Dimensions:
Depth: 3.5" (89mm)
Through Hole: 7.72" (196mm)
Diameter: 8.27" (210mm)
Available in: 4-ohm
Sold Individually

CMB65PRO

6.5" MID-BASS SPEAKER

Power Handling: 150 Watts RMS
Peak Handling: 600 Watts MAX
Frequency Response:
75Hz – 7kHz
20 Oz Strontium Ferrite Magnet
Efficiency: 94dB
1.5" Voice Coil
Mounting Dimensions:
Depth: 2.68" (68mm)
Through Hole: 6.06" (154mm)
Diameter: 6.58" (167mm)
Available in: 4-ohm
Sold Individually



SHARED SPECIFICATIONS

- Poly Cotton Spider
- Riveted Spaded Terminals
- Strontium Ferrite Magnet
- High Temperature Voice Coil
- UV Treated Non Pressed Paper Cone
- UV Treated Accordion Cloth Surround
- Heavy Gauged Coated Steel Basket

COBALT MIDRANGE SPEAKERS

The Midrange Speaker is engineered with a heavy-gauged, stamped steel basket and a precision-crafted bullet phase plug to deliver both strength and exceptional audio performance. The robust, rigid steel basket provides a solid foundation, minimizing resonance and vibrations that could distort sound quality. This sturdy construction not only enhances the speaker's durability but also supports improved sound clarity by maintaining structural integrity during high-power use.

Additionally, the bullet phase plug plays a critical role in optimizing the speaker's dispersion characteristics. By improving sound wave distribution, the phase plug enables a wider, more immersive sound stage, allowing listeners to experience a fuller, more detailed audio experience. Together, the heavy-gauged basket and bullet phase plug make this midrange speaker a powerful, high-performing addition to any sound setup, designed for both reliability and superior sound quality.

ORION
HIGH PERFORMANCE CAR AUDIO

CM65



CM652 / CM654 6.5" MIDRANGE SPEAKERS

Power Handling: 250 Watts RMS
Peak Handling: 1000 Watts MAX
Frequency Response:
120Hz – 10kHz
20 Oz Strontium Ferrite Magnet
Efficiency: 96.67 dB
1.5" Voice Coil
Mounting Depth: 2.63 (66.8mm)
Available in: 2-ohm or 4-ohm
Sold as Pair

SHARED SPECIFICATIONS

- Poly Cotton Spider
- Riveted Spaded Terminals
- Strontium Ferrite Magnet
- Billet Aluminum Phase Plug
- UV Non Pressed Paper Cone
- High Temperature Voice Coil
- UV Treated Accordion Cloth Surround
- Heavy Gauged Coated Steel Basket

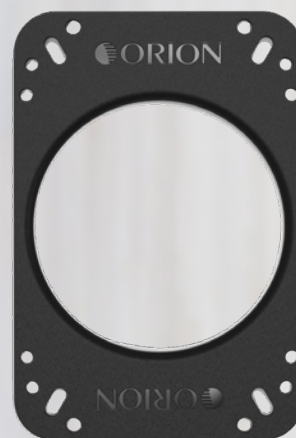
CM852 / CM854 8" MIDRANGE SPEAKERS

Power Handling: 300 Watts RMS
Peak Handling: 1200 Watts MAX
Frequency Response:
80Hz – 16kHz
40 Oz Strontium Ferrite Magnet
Efficiency: 96dB
1.5" Voice Coil
Mounting Depth: 3.19" (81mm)
Available in: 2-ohm or 4-ohm
Sold as Pair

ORION

CM1052 / CM1054 10" MIDRANGE SPEAKERS

Power Handling: 350 Watts RMS
Peak Handling: 1400 Watts MAX
Frequency Response:
50Hz – 12kHz
54 Oz Strontium Ferrite Magnet
Efficiency: 97dB
2" Voice Coil
Mounting Depth: 4.84" (123mm)
Available in: 2-ohm or 4-ohm
Sold Individually



CM1052

CM6852 / CM6854 6X8" MIDRANGE SPEAKERS

Power Handling: 250 Watts RMS
Peak Handling: 1000 Watts MAX
Frequency Response:
70Hz – 20kHz
21 Oz Strontium Ferrite Magnet
Efficiency: 92 dB
1.5" Voice Coil
Mounting Depth: 2.57" (65.4mm)
Available in: 2-ohm or 4-ohm
Sold as Pair

CM6952 / CM6954 6X9" MIDRANGE SPEAKERS

Power Handling: 300 Watts RMS
Peak Handling: 1200 Watts MAX
Frequency Response:
70Hz – 20kHz
44 Oz Strontium Ferrite Magnet
Efficiency: 95 dB
1.5" Voice Coil
Mounting Depth: 3.46" (88mm)
Available in: 2-ohm or 4-ohm
Sold as Pair

CM52 / CM54 5.25" MIDRANGE SPEAKERS

Power Handling: 125 Watts RMS
Peak Handling: 500 Watts MAX
Frequency Response:
100Hz – 20kHz
13 Oz Strontium Ferrite Magnet
Efficiency: 92 dB
1.2" Voice Coil
Mounting Depth: 2.32" (59mm)
Available in: 2-ohm or 4-ohm
Sold as Pair

CM452 / CM454 4" MIDRANGE SPEAKERS

Power Handling: 100 Watts RMS
Peak Handling: 400 Watts MAX
Frequency Response:
150Hz – 20kHz
10.7 Oz Strontium Ferrite Magnet
Efficiency: 88 dB
1.2" Voice Coil
Mounting Depth: 2.05" (52mm)
Available in: 2-ohm or 4-ohm
Sold as Pair



CM452

ORION

ORIONCARAUDIO.COM

BULLET TWEETERS

Bullet tweeters are a type of tweeter that is designed to produce high-frequency sound waves and offer a number of advantages over other types of tweeters. They are small, which makes them easy to install. They also have a wide dispersion pattern, which means that they can produce sound evenly throughout the listening area. Additionally, bullet tweeters are often very efficient, which means that they can produce a lot with minimal amount of power.

HCCA TN1
4.5" Super Neodymium Tweeter
 Aluminum Diaphragm W/Flex Ring
 Neodymium Magnet
 1.5" High-Temperature Voice Coil
 175W RMS | 700W Max Power
 Frequency Response: 2000-28.5kHz
 Efficiency: 118dB
 Sold Individually

HCCA TN2
4.5" Super Neodymium Tweeter
 Aluminum Diaphragm W/Flex Ring
 Neodymium Magnet
 1.5" High-Temperature Voice Coil
 200W RMS | 800W Max Power
 Frequency Response: 1600-20kHz
 Efficiency: 105dB
 Sold Individually



HCCA 100NE
Super Neodymium Tweeter
 Aluminum Diaphragm W/Flex Ring
 Neodymium Magnet
 1" High-Temperature Voice Coil
 100W RMS | 400W Max Power
 Frequency Response: 1.5kHz - 20kHz
 Efficiency: 105dB
 Sold Individually



HCCA 150NE
Super Neodymium Tweeter
 Aluminum Diaphragm W/Flex Ring
 Neodymium Magnet
 1.5" High-Temperature Voice Coil
 150W RMS | 500W Max Power
 Frequency Response: 1.5kHz - 20kHz
 Efficiency: 107dB
 Sold Individually

proud to be LOUD!

XTR COMPRESSION DRIVERS

Compression Horn Drivers featuring Titanium Diaphragms and Ceramic Magnets are distinguished by their remarkable attributes and specifications. These drivers stand out due to their precision-engineered titanium diaphragms, which offer exceptional rigidity and the ability to faithfully reproduce high-frequency sounds. Additionally, the inclusion of

ceramic magnets with potent magnetic fields enhances efficiency and ensures rapid and accurate sound wave production. Their compression horn design further extends their utility, allowing for efficient sound projection over extended distances, making them ideal for large venues and outdoor settings

XTW950FD
4.5" Super Bullet Tweeter
 Aluminum Diaphragm W/Flex Ring
 15 Oz Strontium Ferrite Magnet
 1.5" High-Temperature Voice Coil
 150 W RMS | 600W Max Power
 Frequency Response: 3000-25.6kHz
 Efficiency: 111.8dB
 Sold Individually



XTW750FD
4.5" Super Bullet Tweeter
 Aluminum Diaphragm
 14 Oz Strontium Ferrite Magnet
 1.75" High-Temperature Voice Coil
 140 W RMS | 560W Max Power
 Frequency Response: 1500-25kHz
 Efficiency: 109.9dB
 Sold Individually



XTW250FD
3.4" Super Bullet Tweeter
 Aluminum Diaphragm
 9 Oz Strontium Ferrite Magnet
 1" High-Temperature Voice Coil
 80 W RMS | 320W Max Power
 Frequency Response: 2000-25kHz
 Efficiency: 104dB
 Sold Individually



XTR350HP
3.4" Super Bullet Tweeter
 Aluminum Diaphragm
 15 Oz Strontium Ferrite Magnet
 1" High-Temperature Voice Coil
 125 W RMS | 500W Max Power
 Frequency Response: 3000-25.6kHz
 Efficiency: 114.25dB
 Sold as Pair

XTW350NE
3.2" Super Neodymium Tweeter
 Aluminum Diaphragm
 Neodymium Magnet
 1" High-Temperature Voice Coil
 110 W RMS | 440W Max Power
 Frequency Response: 2000-25kHz
 Efficiency: 112dB
 Sold as Pair



XDK01PB
1.75" Compression Driver
 Titanium Diaphragm
 1.75" CCAW Voice Coil
 29 Oz Ceramic Magnet
 150 W RMS | 600W Max Power
 Frequency Response: 900-17kHz
 Efficiency: 119dB
 45°(H) x 45°(V)
 Sold Individually



XDK02PS
1.75" Compression Driver
 Titanium Diaphragm
 1.75" CCAW Voice Coil
 33 Oz Ceramic Magnet
 175 W RMS | 700W Max Power
 Frequency Response: 1000-25kHz
 Efficiency: 119.2dB
 45°(H) x 45°(V)
 Sold Individually



XDK03PS
1.75" Compression Driver
 Titanium Diaphragm
 1.75" CCAW Voice Coil
 33 Oz Ceramic Magnet
 175 W RMS | 700W Max Power
 Frequency Response: 1000-25kHz
 Efficiency: 117dB
 60°(H) x 40°(V)
 Sold Individually



XDK04.2AS
1.75" Compression Driver
 Titanium Diaphragm
 3" CCAR Voice Coil
 76 Oz Ceramic Magnet
 300 W RMS | 1200W Max Power
 Frequency Response: 650-19.5kHz
 Efficiency: 120.5dB
 45°(H) x 45°(V)
 Sold Individually



COBALT TWEETERS

Elevate your car audio experience with Orion's Cobalt Tweeters, where cutting-edge design meets exceptional sound clarity. Engineered for audiophiles who demand the best, these tweeters deliver sparkling, detailed highs that transform your music into a vivid and immersive experience.

Crafted with premium materials, the Cobalt Tweeters are built to perform flawlessly even under the most demanding conditions. Their sleek and compact design ensures seamless integration into any audio system, making them as versatile as they are powerful. Whether you're enjoying smooth vocals or sharp instrumentals, these tweeters maintain crystal-clear sound with precision and balance, even at high volumes.

Take your sound system to new heights with the Cobalt Tweeters—a perfect harmony of style, durability, and performance that brings every nuance of your favorite tracks to life. Rediscover the joy of music with Orion.



CTW880H **6.3\" x 4.7\" Aluminum Die-Cast Bullet Horn**

Aluminum Diaphragm
20 Oz. Strontium Ferrite Magnet
1.75\" High-Temperature Voice Coil
130 W RMS | 520W Max Power
Frequency Response: 2000-25kHz
Efficiency: 112dB
Sold Individually



CTW150 **3.8\" Super Bullet Tweeter**

Aluminum Diaphragm
15 Oz. Strontium Ferrite Magnet
1.\" High-Temperature Voice Coil
65 W RMS | 260W Max Power
Frequency Response: 3500-23kHz
Efficiency: 102dB
Sold as Pair



CTW2.0NEO **3.8\" Super Tweeter**

Aluminum Diaphragm
Neodymium Magnet
1.\" High-Temperature Voice Coil
100 W RMS | 400W Max Power
Frequency Response: 3500-26kHz
Efficiency: 106.5dB
Sold as Pair

proud to be LOUD!

COBALT



CTW101 **3.75\" Bullet Tweeter**

Aluminum Diaphragm
20 Oz. Strontium Ferrite Magnet
1.\" High-Temperature Voice Coil
50 W RMS | 200W Max Power
Frequency Response: 2000-25kHz
Efficiency: 99dB
Sold as Pair

CTW500 **4.5\" Super Bullet Tweeter**

Aluminum Diaphragm
30 Oz. Strontium Ferrite Magnet
1.75\" High-Temperature Voice Coil
130 W RMS | 520W Max Power
Frequency Response: 2000-20kHz
Efficiency: 104dB
Sold Individually



CTW1.7HP **3.8\" Super Tweeter**

Aluminum Diaphragm
15 Oz. Strontium Ferrite Magnet
1.\" High-Temperature Voice Coil
75 W RMS | 300W Max Power
Frequency Response: 3500-23kHz
Efficiency: 104.9dB
Sold as Pair



CTW200 **3.7\" Super Bullet Tweeter**

Aluminum Diaphragm
30 Oz. Strontium Ferrite Magnet
1.\" High-Temperature Voice Coil
65 W RMS | 260W Max Power
Frequency Response: 2000-20kHz
Efficiency: 104dB
Sold Individually



CTW125 **3.9\" Bullet Tweeter**

Aluminum Diaphragm
20 Oz. Strontium Ferrite Magnet
1.\" High-Temperature Voice Coil
50 W RMS | 200W Max Power
Frequency Response: 2000-25kHz
Efficiency: 98.7dB
Sold as Pair



proud to be LOUD!

XTR FULL-RANGE SPEAKERS

The XTR Coaxial speakers offer a wide range of speaker sizes to meet diverse market demands, enhancing your vehicles experience. Precision-crafted with quality materials and advanced technologies, such as a heavy-gauge steel frame, these speakers not only ensure durability but also contribute significantly to overall performance by reducing vibrations and ensuring secure mounting. Our speakers are the ideal choice for those in search of pristine and accurate sound while on the road.

XTR57.2 5x7" 2-WAY FULL-RANGE SPEAKER

Power Handling: 75 Watts RMS
Peak Handling: 300 Watts MAX
Frequency Response: 80Hz - 22kHz
Efficiency: 91dB
Mounting Depth: 2.17" (55mm)



XTR65.3 6.5" 3-WAY FULL-RANGE SPEAKER

Power Handling: 100 Watts RMS
Peak Handling: 400 Watts MAX
Frequency Response: 85Hz - 22kHz
Efficiency: 91dB
Mounting Depth: 2.32 (59mm)



XTR69.3 6x9" 3-WAY FULL-RANGE SPEAKER

Power Handling: 100 Watts RMS
Peak Handling: 400 Watts MAX
Frequency Response: 55Hz - 22kHz
Efficiency: 93dB
Mounting Depth: 3.31" (84mm)



XTR52.2 5.25" 2-WAY FULL-RANGE SPEAKER

Power Handling: 75 Watts RMS
Peak Handling: 300 Watts MAX
Frequency Response: 85Hz - 22kHz
Efficiency: 89dB
Mounting Depth: 2.36" (60mm)



XTR46.2 4x6" 2-WAY FULL-RANGE SPEAKER

Power Handling: 65 Watts RMS
Peak Handling: 250 Watts MAX
Frequency Response: 90Hz - 22kHz
Efficiency: 88dB
Mounting Depth: 2.01" (51mm)



XTR40.2 4" 2-WAY FULL-RANGE SPEAKER

Power Handling: 65 Watts RMS
Peak Handling: 250 Watts MAX
Frequency Response: 120Hz - 22kHz
Efficiency: 87.5dB
Mounting Depth: 1.89" (48mm)



XTR35.2 3.25" 2-WAY FULL-RANGE SPEAKER

Power Handling: 40 Watts RMS
Peak Handling: 160 Watts MAX
Frequency Response: TBA
Efficiency: TBA
Mounting Depth: TBA



XTR275.2 2.75" 2-WAY FULL-RANGE SPEAKER

Power Handling: 40 Watts RMS
Peak Handling: 160 Watts MAX
Frequency Response: TBA
Efficiency: TBA
Mounting Depth: TBA



XTR65.2SL 6.5" 2-WAY SHALLOW FULL-RANGE SPEAKER

Power Handling: 60 Watts RMS
Peak Handling: 240 Watts MAX
Frequency Response: 85Hz - 22kHz
Efficiency: 90dB
Mounting Depth: 1.69 (43mm)



proud to be **LOUD!**

XTR COMPONENT SPEAKER SYSTEMS

The XTR 2-Way Component Speaker System boasts a range of standout features that elevate its audio performance. At the heart of these speakers are silk dome tweeters, known for their ability to render high-frequency sounds with exceptional smoothness and precision, enhancing audio clarity and detail. These speakers are further equipped with a 12dB passive crossover, a critical component that directs the appropriate frequencies to the respective drivers, preventing distortion and ensuring a seamless transition between the tweeter and other speaker components.



XTR65.SC 6.5" 2-WAY COMPONENT SYSTEM

Power Handling: 115 Watts RMS
Peak Handling: 450 Watts MAX
Frequency Response: 75Hz – 22kHz
Efficiency: 93dB
Mounting Depth: 2.32" (59mm)
Tweeter Mounting Depth: 3.49" (88.7mm)

XTR55.SC 5.25" 2-WAY COMPONENT SYSTEM

Power Handling: 65 Watts RMS
Peak Handling: 260 Watts MAX
Frequency Response: 80Hz – 22kHz
Efficiency: 90dB
Mounting Depth: 2.36" (60mm)
Tweeter Mounting Depth: 3.49" (88.7mm)

XTR1.00TW 1" SILK DOME TWEETER

Power Handling: 50 Watts RMS
Peak Handling: 200 Watts MAX
Frequency Response: 1500Hz – 20kHz
Efficiency: 90dB
Mounting Depth: 1" (25mm)



COBALT COMPONENT SPEAKER SYSTEMS

Cobalt Component Speakers are the perfect fusion of thoughtful design and exceptional performance. At their core, these speakers feature a meticulously engineered cone that plays a pivotal role in delivering precise and clear sound reproduction. The components hardware and materials, ensure that these speakers operate reliably even under demanding conditions. What sets these speakers apart is their versatility, Whether you desire a seamless, integrated appearance or require surface-mounted speakers for specific installation needs, these speakers provide the flexibility to tailor your audio system.



CB65C 6.5" 2-WAY COMPONENT SYSTEM

Power Handling: 70 Watts RMS
Peak Handling: 280 Watts MAX
Frequency Response: 75Hz – 20kHz
Efficiency: 88dB
Mounting Depth: 2.52" (64mm)
Tweeter Mounting Depth: 0.87" (22mm)

CB525C 5.25" 2-WAY COMPONENT SYSTEM

Power Handling: 60 Watts RMS
Peak Handling: 240 Watts MAX
Frequency Response: 80Hz – 20kHz
Efficiency: 88dB
Mounting Depth: 2.05" (52mm)
Tweeter Mounting Depth: 0.87" (22mm)

CB1TW 1" SILK DOME TWEETER

Power Handling: 40 Watts RMS
Peak Handling: 160 Watts MAX
Frequency Response: 1500Hz – 20kHz
Efficiency: 88dB
Mounting Depth: 0.87" (22mm)



COBALT FULL-RANGE SPEAKERS

The Cobalt Series Coaxial Speakers are highly regarded for their exceptional combination of flexibility, durability, and performance. A key element in these speakers is the inclusion of a butyl rubber surround, which not only enhances their flexibility for accurate sound reproduction but also adds durability by making them resilient against wear and tear. These speakers provide a listening experience that truly stands out.

proud to be **LOUD!**

COBALT

CB693 6x9" 3-WAY FULL-RANGE SPEAKER

Power Handling: 80 Watts RMS
Peak Handling: 320 Watts MAX
Frequency Response: 60Hz - 20kHz
Efficiency: 88dB
Mounting Depth: 2.91" (74mm)

CB683 6x8" 3-WAY FULL-RANGE SPEAKER

Power Handling: 70 Watts RMS
Peak Handling: 280 Watts MAX
Frequency Response: 75Hz - 20kHz
Efficiency: 88dB
Mounting Depth: 2.68" (68mm)

CB653 6.5" 3-WAY FULL-RANGE SPEAKER

Power Handling: 60 Watts RMS
Peak Handling: 240 Watts MAX
Frequency Response: 75Hz - 20kHz
Efficiency: 88dB
Mounting Depth: 2.52" (64mm)

CB52 5.25" 2-WAY FULL-RANGE SPEAKER

Power Handling: 50 Watts RMS
Peak Handling: 200 Watts MAX
Frequency Response: 80Hz - 20kHz
Efficiency: 87dB
Mounting Depth: 2.05" (52mm)

CB462 4x6" 2-WAY FULL-RANGE SPEAKER

Power Handling: 40 Watts RMS
Peak Handling: 160 Watts MAX
Frequency Response: 100Hz - 20kHz
Efficiency: 86dB
Mounting Depth: 1.65" (42mm)

CB42 4" 2-WAY FULL-RANGE SPEAKER

Power Handling: 40 Watts RMS
Peak Handling: 160 Watts MAX
Frequency Response: 105Hz - 20kHz
Efficiency: 85dB
Mounting Depth: 1.73" (44mm)

CB35 4" 2-WAY FULL-RANGE SPEAKER

Power Handling: 30 Watts RMS
Peak Handling: 120 Watts MAX
Frequency Response: 110Hz - 20kHz
Efficiency: 85dB
Mounting Depth: 1.65" (42mm)

XTR CROSSOVERS

Discover the Orion Crossover Collection, designed to give you precise control over deep, powerful bass and crystal-clear highs. With adjustable crossover points, phase alignment, and remote bass boost, these crossovers provide exceptional sound quality with minimal distortion. Built for audiophiles and engineered for durability, the Orion Crossovers easily integrate into any system, offering a fully customizable and immersive audio experience.



XTR-X4R

4-WAY ELECTRONIC CROSSOVER
 Adjustable Bass Boost: 0-18 dB
 Selectable Crossover Frequency
 High Pass: 1.2Hz - 8kHz
 Mid High Pass: 90Hz - 1.1kHz
 Mid Low Pass: 2kHz - 8kHz
 Subwoofer (Low Pass): 50Hz - 500Hz
 Subsonic Filter: 20Hz - 40Hz
 S/N Ratio: >90dB
 Max Output Signal Level: 11V
 Slope Ratio: 12dB/ Octave
 Distortion: less than 0.05%
 Power Supply: 10-16V DC, Negative Ground

XTR-X3R

3-WAY ELECTRONIC CROSSOVER
 Adjustable Bass Boost Frequency:
 25Hz - 250Hz
 Adjustable Bass Boost: 0-18 dB
 Adjustable Q Control: 2 - 20
 High Pass: 40Hz - 8kHz
 Mid High Pass: 40Hz - 8kHz
 Mid Low Pass: 2kHz - 7kHz
 Subwoofer (Low Pass): 40Hz - 400Hz
 S/N Ratio: >85dB
 Max Output Signal Level: 7.0V/RMS
 Slope Ratio: 12dB/ Octave
 Distortion: less than 0.05%
 Power Supply: 10-16V DC, Negative Ground



XTR EQUALIZERS

Orion equalizers enhance car audio systems by offering precise frequency control. With robust, easy-to-install designs, they feature multiple bands for detailed sound tuning, subwoofer controls, and auxiliary inputs. Orion's equalizers, available in both analog and digital formats, improve sound quality and user experience in any vehicle.



- XTR-X3B**
11-BAND GRAPHIC EQUALIZER / CROSSOVER
- Auxiliary Input
 - 11 Bands of Sound Control
 - Front, Rear, and Subwoofer Outputs
 - High-Quality Signal Processing

- XTR-X7**
7-BAND GRAPHIC EQUALIZER W/ FRONT INPUT
- Auxiliary Input
 - 7 Bands of Sound Control
 - Front, Rear, and Subwoofer Outputs
 - High-Quality Signal Processing

- XTR-X70BTM**
7-BAND GRAPHIC EQUALIZER W/ BLUETOOTH
- Auxiliary Input
 - 7 Bands of Sound Control
 - Front, Rear, and Subwoofer Outputs
 - High-Quality Signal Processing

SIGNAL PROCESSORS

Orion Signal Processors are crafted to elevate your audio setup by providing precise control over sound frequencies, allowing you to fine-tune bass, mids, and highs for a fully customized experience. Built with advanced filtering and equalization features, these processors enhance clarity and depth, ensuring every detail is perfectly balanced. Ideal for audiophiles and sound enthusiasts, Orion Signal Processors help create a truly immersive and professional-grade audio experience.

OLC2

- 2-CHANNEL LINE OUTPUT CONVERTER W/ BASS PROCESSOR**
- Converts high-level speaker outputs to low-level RCA outputs for easy amplifier integration
 - Built-in bass processor for enhancing low frequencies, adding depth and impact to your audio
 - Adjustable bass boost control to fine-tune low-end response according to your preference



OLH28C

2-CHANNEL LINE HIGH TO LOW CONVERTOR

HCCATM
COMPETITION

ORION
HIGH PERFORMANCE CAR AUDIO



PROUD TO BE **LOUD!**

3130 WEST 15TH AVENUE HIALEAH, FLORIDA 33012
TEL: 786.464.0247 EMAIL: SUPPORT@ORIONCARAUDIO.COM ORIONCARAUDIO.COM

PROUD SPONSOR OF



Copyright ORION

All rights reserved. Any unauthorized reproduction or use of any Orion logos, images or design elements is strictly prohibited by law. Specifications subject to change without notice. REV. 25.01

2025

SOUND PROS INC, ALL RIGHTS RESERVED

